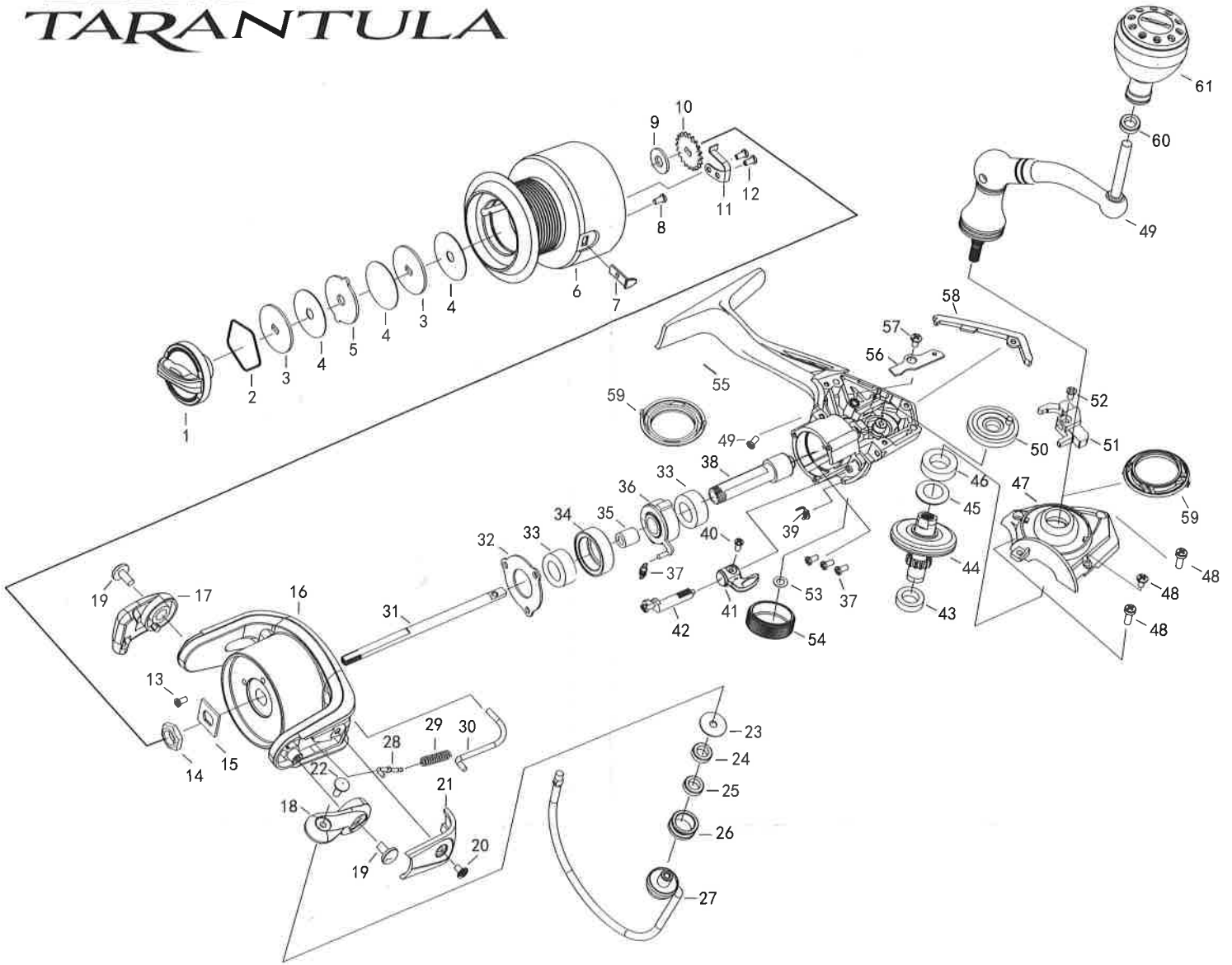


# SEAHAWK® TARANTULA



- |                     |                          |                                |                          |
|---------------------|--------------------------|--------------------------------|--------------------------|
| 1 Drag Knob         | 17 Bail Holder           | 33 Pinion Bearing              | 49 CNC Handle            |
| 2 Spool Stop Ring   | 18 Bail Arm              | 34 Bearing Bushing             | 50 Oscillation Gear      |
| 3 Key Washer        | 19 Screw                 | 35 Bearing Inner ring          | 51 Slider                |
| 4 Drag Washer       | 20 Screw                 | 36 One Way Clutch Ball Bearing | 52 Screw                 |
| 5 Eared Washer      | 21 Bail Arm Side Cover   | 37 Bearing Spring              | 53 Handle Cap Washer     |
| 6 Spool             | 22 Screw                 | 38 Pinion Gear                 | 54 Handle Cap            |
| 7 Line Hook         | 23 Roller Washer         | 39 Spring                      | 55 Main Body             |
| 8 Screw             | 24 Roller Ball Bearing   | 40 Screw                       | 56 Slider Retainer Plate |
| 9 Click Gear Washer | 25 Rollor Bushing        | 41 Anti-reverse Lever          | 57 Screw                 |
| 10 Click Gear       | 26 Roller                | 42 Anti-reverse Bolt           | 58 Body Cover            |
| 11 Click Slice      | 27 Bail ASSY             | 43 Body Bearing                | 59 Body Cover            |
| 12 Screw            | 28 Bail Arm Lever        | 44 Drive Gear                  | 60 Ball Bearing          |
| 13 Screw            | 29 Bail Arm Spring       | 45 Drive Gear Washer           | 61 Alu.Round knob        |
| 14 Rotor Nut        | 30 Rotor Trip Lever      | 46 Body Cover Bearing          |                          |
| 15 Rotor Retainer   | 31 Main Shaft            | 47 Body Cover                  |                          |
| 16 Rotor            | 32 Ball Bearing Retainer | 48 Screw                       |                          |